



RUBY DOME I

Specifications

- 1,911 Square Foot Interior
- 673 Square Foot Garage
- 2 Car Garage
- 3 Bedrooms
- 2 Baths

Options and Upgrades

- Semi-customizable finish
- Covered patio
- Chef's kitchen
- 3 Car Garage (see [Ruby Dome II](#))
- Bonus rooms (see [Ruby Dome III](#), [Ruby Dome IV](#), [Ruby Dome V](#))
- Pole frame shop
- Stamped concrete
- Walk-in shower
- Farmhouse sinks
- Pendant lighting above kitchen island
- Wall sconces

For a complete list of options and upgrades, see [Ruby Dome Options and Upgrades](#).

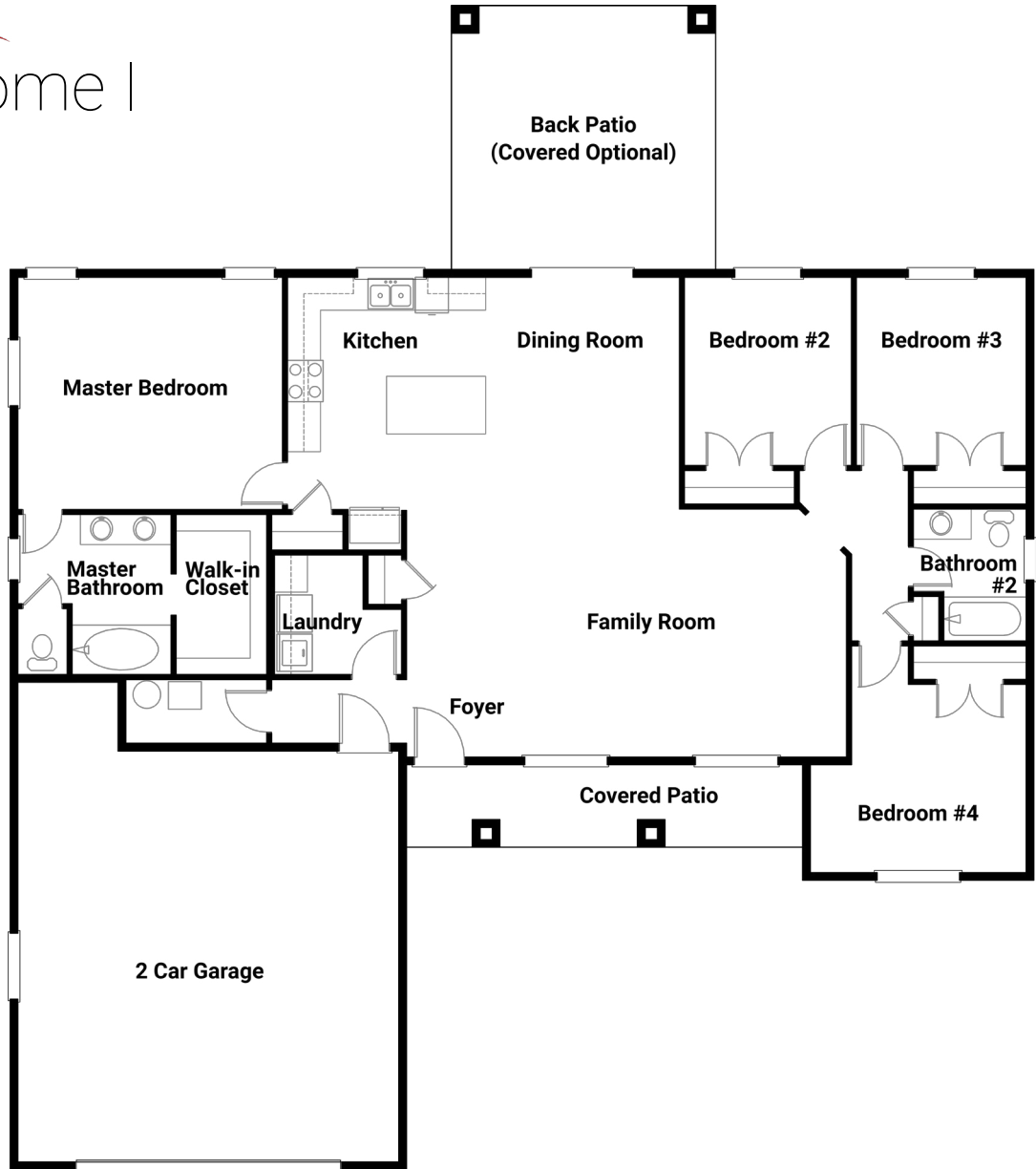
Standard Features

- Full stucco exterior
- Energy efficient R21 interior insulation and R50 attic insulation, with 15-20% more insulation contact-with-wall
- Advanced framing methods contributing to energy efficiency
- Full insulated garage
- Fully sealed, insulated, heated and cooled crawlspace
- Central air conditioning and heating
- Frost freeze hose faucets
- Width-of-garage 22' concrete driveway
- 14x14' Back patio
- Custom European-mounted cabinets
- Granite countertops
- 50 gallon water heater
- Vaulted ceiling

For a complete list of standard features, see [Ruby Dome Standard Features](#)



Ruby Dome I Floor Plan



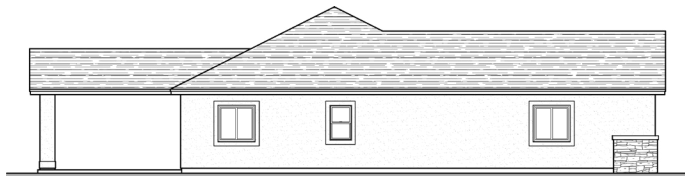
Elevations



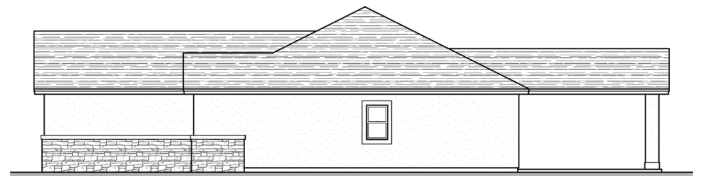
Front



Back



Left



Right